

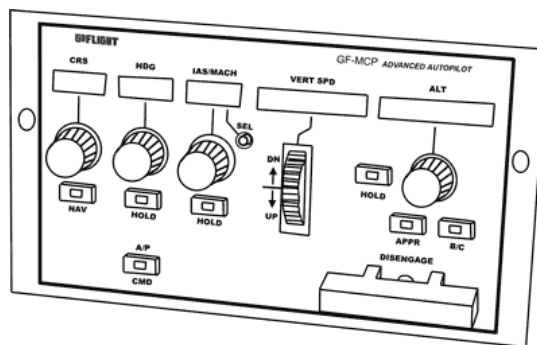


GF-MCP ADVANCED AUTOPILOT COCKPIT CONTROL MODULE

INSTALLATION AND OPERATION

Congratulations on your purchase of a GoFlight GF-MCP Advanced Autopilot module, part of the expanding family of GoFlight GF-AC Cockpit Control System modules.

The GF-MCP is designed to operate with a wide variety of simulated aircraft, and is sure to add lots of enjoyment to your flight sim experience. We hope that you find it easy to install, configure and use, and that these instructions will help to get you up in the “virtual skies” with the GF-MCP as quickly as possible.



Installing the GF-MCP

NOTE *If you own other GoFlight hardware and have already installed the same or more recent version of GoFlight software than that included with your GF-MCP, you do not need to install the software again. Simply skip Step 1 in the instructions below.*

1. Get on line and go to goflightinc.com.
2. On the home page click Support/Downloads (Located on the orange line just below our logo).
3. Click on “Module Support Software” to download our latest drivers.
4. Click “Run”. Follow the instruction to load your software.

If the software installer detects that GoFlight software is already installed on your system, it will prompt you to overwrite. Click the **Yes** button to overwrite the existing version of GoFlight software. This is useful if you wish to keep the configuration settings for other GoFlight modules installed on your system, however, you should first make sure that the software you are overwriting is an older version and not a newer one.

5. If you are planning to install the GF-MCP module into a GoFlight rack enclosure, install the module in any desired location in the enclosure and fasten it in place using the two thumbscrews that are included in the GF-MCP packaging.
6. Plug the USB cable “B” connector (square) end into the connector on the back of the GF-MCP circuit board.
7. Plug the USB cable “A” connector end (rectangular) to a USB port on your computer. The message “New Hardware Found” will appear briefly, showing that the GF-MCP was detected. When the operating system recognizes the GF-MCP, you will see the GF-MCP’s “wakeup” sequence – the LED displays light up with messages “123” in the 3-digit displays and “123456” in the 6-digit displays, sweeping across left to right, followed by a quick left-to-right sweep of all

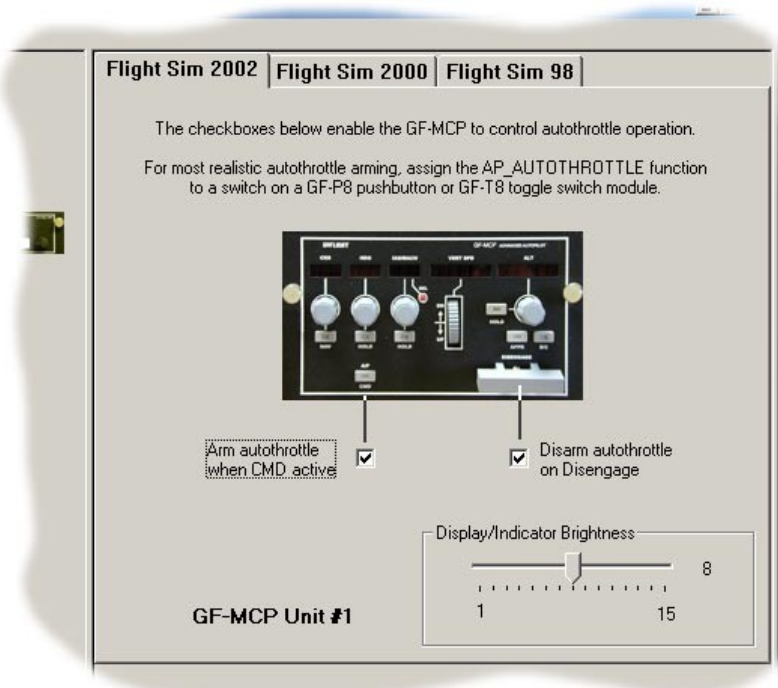
the lighted pushbuttons. This sequence will repeat any time you disconnect and re-connect the module, and each time you start up your computer. It indicates that the GF-MCP is ready to use.

8. After you install the GF-AC software and connect the GF-MCP for the first time, run the GFConfig program, which is located in your Programs menu under “GoFlight”. Verify that GFConfig displays an icon representing the GF-MCP unit on the left-hand side of the window. Left-click on the GF-MCP icon to show the configuration options in the right-hand side of the window.

Configuring the GF-MCP

Using GFConfig, you can change certain characteristics of the GF-MCP’s operation, so that it can operate most realistically with different types of aircraft. You select the GF-MCP for configuration by left clicking on its icon in the left-hand portion of the GFConfig window. Once the GF-MCP is selected for configuration, you can then select from the various options presented on the right-hand side of the GFConfig window.

The options presented by GFConfig may change from one release of software to another, as GoFlight is continually developing new software features and releasing them via software updates. Because of this, we suggest that you consult GFConfig’s on-line help facility, which contains details about the configuration options available in your release of software.



The sample screen shot above was taken from Version 1.25 of GFConfig, and shows GFConfig’s configuration view for the GF-MCP. If you have a different version of software, the options and the layout of the window may differ from the one shown here.

GF-MCP Operation

The GF-MCP has numerous displays, knobs, and other controls on its panel, and is capable of simulating autopilot equipment that is typically found on a wide range of aircraft. The GF-MCP’s panel design is not intended to “copy” any one specific real-world autopilot, but rather to provide as much autopilot functionality as possible while you enjoy flying many different types of simulated aircraft.

Following are descriptions of each of the elements on the GF-MCP control panel:

CRS (Course) Adjustment Knob and Display

This knob selects a heading value from 1 to 360 degrees, which represents a radial to the VOR station that is currently tuned on the NAV1 radio. This heading value is also known as the OBS1 heading. The currently set value is shown on the 3-digit LED display under the CRS label on the panel. The CRS value is used in conjunction with the NAV button beneath the knob.

HDG (Heading) Adjustment Knob and Display

This knob selects a heading value from 1 to 360 degrees, and is used to establish and maintain the aircraft's heading when the HOLD button beneath the knob is activated. The currently-set value is shown on the 3-digit LED display under the HDG label on the panel.

IAS/MACH (Speed) Adjustment Knob and Display

This knob selects an airspeed value, displayed either in Knots Indicated Airspeed (IAS) or MACH Number, on the 3-digit LED display under the IAS/MACH label on the panel. On aircraft featuring an autothrottle, this is used to establish and maintain the aircraft's speed when the HOLD button beneath the knob is activated.

SEL (Speed Display Select) Button

The Speed Display Select button switches the airspeed display value between Knots Indicated Airspeed and MACH Number. On aircraft panels where MACH Hold and IAS Hold are represented using individual buttons, when Speed Hold is engaged, pushing the Speed Display Select button will toggle between IAS Hold and MACH Hold, to remain synchronized with the value shown in the speed readout.

VERT SPD (Vertical Speed) Adjustment Wheel and Display

The Vertical Speed adjustment wheel selects a rate of climb or descent, the currently-selected value being shown on the 6-digit LED display under the V/S label on the panel.

ALT (Altitude) Adjustment Knob and Display

This knob selects an altitude value, and is used to establish and maintain the aircraft's altitude whenever the HOLD button beside the knob is activated. The currently-selected altitude is shown on the 6-digit LED display beneath the ALT label on the panel.

NAV Button

This button engages and disengages the NAV Hold function. When the button's internal LED is lit, the NAV Hold mode is engaged.

HDG HOLD Button

This button engages and disengages the Heading Hold function. When the button's internal LED is lit, the Heading Hold mode is engaged.

Speed HOLD Button

This button engages and disengages the Speed Hold function. When the button's internal LED is lit, the Speed Hold mode is engaged.

Altitude HOLD Button

This button engages and disengages the Altitude Hold function. When the button's internal LED is lit, the Altitude Hold mode is engaged.

Approach Hold (APPR) Button

This button engages and disengages the Approach Hold function. When the button's internal LED is lit, the Approach Hold mode is engaged.

Back Course Hold (B/C) Button

This button engages and disengages the Back Course Hold function. When the button's internal LED is lit, the Back Course Hold mode is engaged.

Autopilot Command (A/P CMD) Button

This button engages and disengages the Autopilot Command function. This is the master switch for all other autopilot modes, and must be activated in order for any other autopilot modes to function. When the button's internal LED is lit, Autopilot Command is engaged.

Disengage Control Bar

The disengage control bar is similar to those found on large commercial jet aircraft. Its purpose is to quickly turn off any and all functions of the autopilot. This allows the pilot to regain manual control of the aircraft at any desired time. When the disengage control bar is in the DOWN position, the autopilot is disengaged and no autopilot modes will function. When the bar is in the UP position, the autopilot can be activated, and its modes engaged or disengaged using the individual HOLD buttons.

GF-MCP Warranty

The GF-MCP Advanced Autopilot module ("GF-MCP") is warranted to the original purchaser to be free from defects in materials and workmanship for a period of one (1) year from the date of purchase. During this warranty period, GoFlight, Inc. ("GoFlight") will, at its option, repair or replace, at no charge, any component determined to be defective. The liability under this warranty is limited to the repair and/or replacement of the defect or defective part, and does not include shipping expenses. This warranty does not apply if, in the determination of GoFlight, the GF-MCP has been damaged by accident, abuse, improper usage, or as a result of service or modification by other than GoFlight.

NO OTHER WARRANTIES ARE EXPRESSED OR IMPLIED, INCLUDING BUT NOT LIMITED TO IMPLIED WARRANTIES OF SALABILITY AND FITNESS FOR A PARTICULAR PURPOSE. GOFLIGHT, INC. IS NOT RESPONSIBLE FOR CONSEQUENTIAL DAMAGES. SOME STATES DO NOT ALLOW EXCLUSION OR LIMITATION OF INCIDENTAL OR CONSEQUENTIAL DAMAGES, SO THE ABOVE LIMITATION OR EXCLUSION MAY NOT APPLY TO YOU.

This warranty gives you specific legal rights, and you may also have other rights which vary from state to state.

For warranty services, contact GoFlight Inc. at 503-671-9317 for return authorization instructions.

